



SHINING 3D®

# AutoScan-DS-EX Pro Dental 3D Scanner

Outstanding Scan Speed



SHINING 3D's newest addition to our dental 3D scanners lineup, the AutoScan-DS-EX Pro, features a compact size, lightweight, a number of versatile functions, and outstanding scan speed, to meet our customers' demands for numerous scan. It is highly suitable for data capturing in restorations, orthodontics and implant cases. It comes integrated with two projector options – blue light and white light. The scanner meets customers' different expectations for various applications. Thanks to the combination of superior scan speed and high accuracy, the AutoScan-DS-EX Pro is destined to bring the global digital dental industry to yet a much higher level.

## High Efficiency

Bite: 8s, upper/lower jaw: 15s, 1-8 dies: 15s, impression: 70s

## Compact Size

AutoScan-DS-EX Pro with its compact size is a portable scanner. Its open structure guarantees easy and convenient maintenance and model placement

## Open System

Export STL data, high compatibility with current open CAD/CAM software in the market

## Full-Function

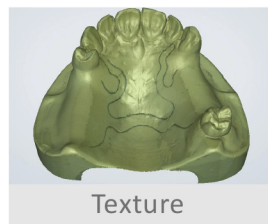
Dental impressions, gypsum models, wax-ups, articulators, dies and textures for dental cases



Impression



Articulator



Texture



1-8 dies

## Option for White or Blue Light



Color Texture



Black & White Texture

## Specification

Camera Resolution	1.3MP
Accuracy	≤10μm
Scanning Time	Bite: 8s, upper/lower jaw: 15s, 1-8 dies: 15s, impression: 70s
Dimension	260mm*270mm*420mm
Size	5kg
Output format	STL , OBJ
Interface	USB 3.0
Power	DC24V
Light Source	White/blue light optional

HANGZHOU SHINING 3D TECH CO., LTD.

sales@shining3d.com

+86 571 82999050

www.shining3d.com / www.shining3ddental.com